



NEW

The **glass balustrade**
for **housing & offices**

OPTIMAL
BY ITS **PRICE**

SIMPLE
INSTALLATION

FLEXIBLE
BY ITS TYPES OF MOUNTINGS

OPTIMAL

BY ITS **PRICE**

BY ITS **COMPACTNESS**

BY ITS **PERFORMANCE**

Its design is minimalist like its price!

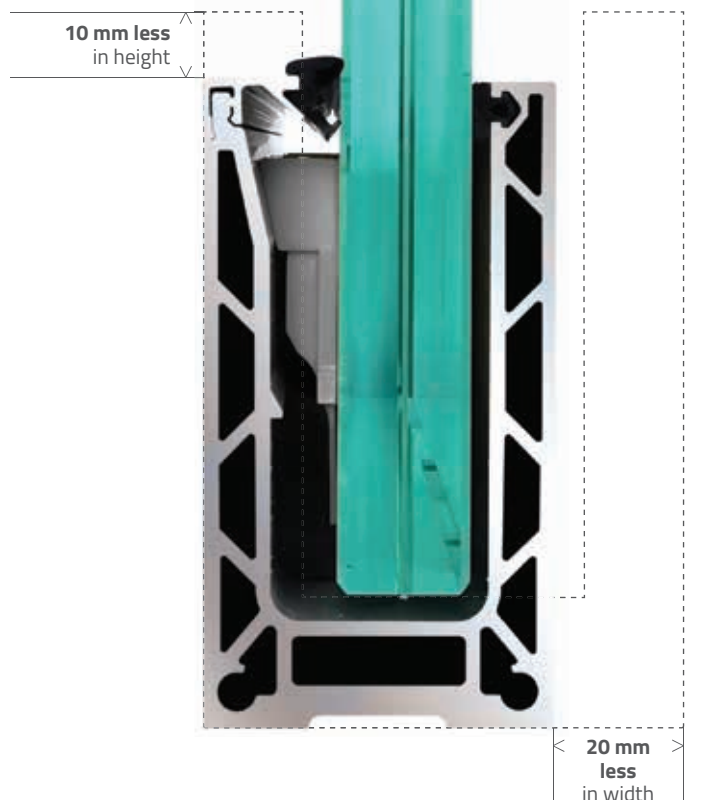
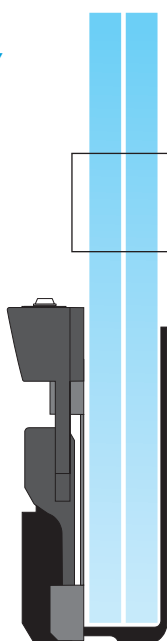
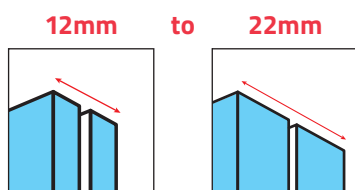
This new **OSF rail** is the narrowest in its category: **55 mm wide**, the most efficient on the market with this compactness. It can be used to create guardrails that meet ERP standards. Glass thicknesses range from **12 to 22 mm**.

For a price defying all competition!

TESTED &
APPROVED
✓

WIDE COMPATIBILITY OF GLASS

Glass: **from 12 to 22mm**
Monolithic or laminated



SIMPLE

TO ORDER

TO STORE

TO INSTALL

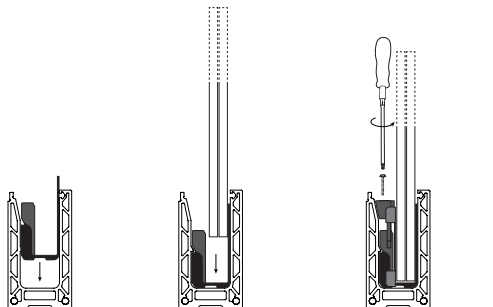
Less accessories... **Your order is simplified.**
Its weight and size **optimize its storage.**

Easy to install from one side only!

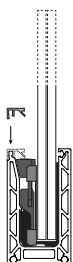
Installation is quick and easy in two steps:

- first, you have to put the wedge in position and tighten it, on one side of the glass (ONE SIDE),
- the second and final step is to install the single cover and gasket.

STEP 1



STEP 2



**You have
completed
finished your
installation!**



INSTALL, IT'S FIXED!

1 ONE SIDE ONE STEP !

Optimize your installation
times even more!
Very fast tightening,
on one side only.

2 CLADDING WITH GASKET

Only one cladding to fix



FLEXIBLE

BY ITS **TYPES OF MOUNTINGS**

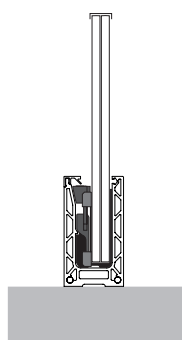
BY ITS SUPPORTS

BY ITS APPLICATIONS

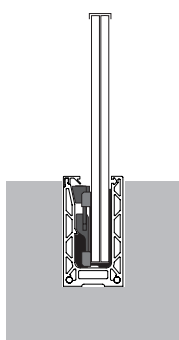
Flexible, it adapts to all situations!

The OSF system can be used in many different installation configurations: **floor, recessed, lateral, inverted lateral, curved, rampant...**

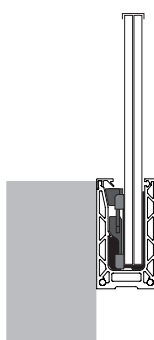
It can be fixed on all structures (concrete, wood, metal), and meets the requirements of private and public applications.



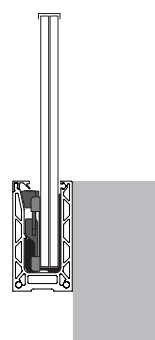
**FLOOR
MOUNTING**



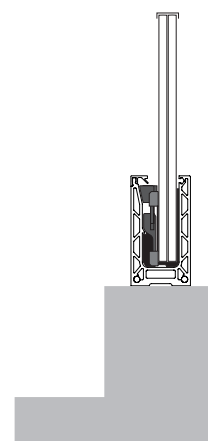
**BUILT-IN-SLAB
MOUNTING**



**LATERAL
MOUNTING**

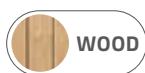


**LATERAL
INVERTED SIDE
MOUNTING**



**ACROTERION
MOUNTING**

Compatible with all structures



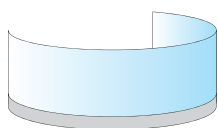
WOOD



CONCRETE

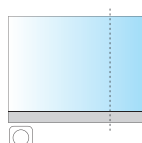


METAL



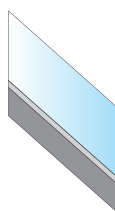
CURVED

Curved railings.
Bending is possible
from a minimum radius
of 1 meter.



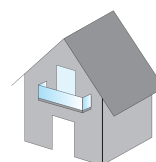
TAILOR MADE

Adapts to even the
tightest corners.

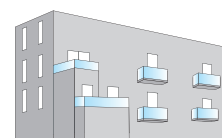


INCLINE

Up to 40° angle
to the horizontal.



PRIVATE



PUBLIC

OPTIMAL, SIMPLE, FLEXIBLE... AND ECOLOGICAL!



Packaging &
recyclable product

Our wedges are made
with **100% recycled ABS plastic**
(*Acrylonitrile Butadiène Styrène*).

At each end of life of our holds,
this material is recovered and mixed
with virgin ABS to make new products.



Our patented
systems are
made in France.



SUSTAINABLE, a priority

Our **products** are designed
to be **sustainable**, not only through
their **performance** but also through
the **choice of materials used**.



HANDRAILS

CHOOSE your style

Maintain an elegant and successful design of your railing by opting for a handrail that will give contrast to your project.

In addition to the aesthetic side, **its primary function** is **the protection of the top of the glass** which is the most fragile part.



Our
EXPERT

advice: The installation of an aluminum or stainless steel handrail allows an easy alignment of the glass panels.



GLASS CLAMPED HANDRAIL Fixing between glasses

Ref. Page 12

ITS ADVANTAGES:

- Allows you to attach a handrail
- Easy to assemble
- Very resistant



CLAMP BETWEEN GLASS

Ref. Page 12



WOOD, an authentic choice

An ecological material and natural.

ITS ADVANTAGES:

- Noble and natural material
- Easy change of color (varnish or paint)
- Warm atmosphere

Ref. Page 12



ALUMINUM, a modern look

The right finish for different project styles.

ITS ADVANTAGES:

- Resistant and durable material.
- More sober effect.
- Very little maintenance (Sadev cleaning kit).

Ref. Page 12



STAINLESS STEEL, a contemporary style

Design and refined, stainless steel is recognized for its great durability.

ITS ADVANTAGES:

- Solid.
- Resistant to temperature variations.
- Anti-corrosion.
- Very low maintenance (Sadev cleaning kit).

Ref. Page 12



OSF PROFILE

TECHNICAL DATA

Length	3 000 mm (009OSF-R70) 6 000 mm (009OSF-R80)
Materials	20 µm anodized aluminum
Type of application	Private / Public
Type of mounting	Floor, lateral, built-in-slab, acroterion mounting
Glass thickness	Laminated: 6.6 (12.4 > 13.9 mm) 8.8 (16.2 > 17.6 mm) 10.10 (21.2 > 21.6 mm)
Number of wedges	4 per meter
Finishes	Anodized aluminum RAL color chart - black
Max. Height	1 100 mm
Profile attachment	Every 300 mm



CERTIFICATIONS



DIFFERENT TYPE OF MOUNTING



Floor mounting



Built-in-slab mounting



Lateral mounting

WEDGES

Glasses: 6.6

Glass thickness: 12.4 > 13.9
Ref.: 009OSF-K12-0606

Glasses: 8.8

Glass thickness: 16.2 > 17.6
Ref.: 009OSF-K12-0808

Glasses: 10.10

Glass thickness: 21.2 > 21.6
Ref.: 009OSF-K12-1010

CLADDING GASKET

SNAP-FIT



Ref.: 009JC0809A-N

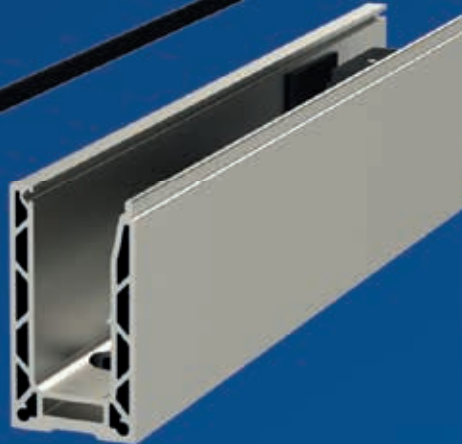


Ref.: 009JC0309A-N



END CAP

Ref.: 009OSF-CE01



HIGH CLADDING

Ref.: 009OSF-C310
Length: 3 m

Ref.: 009OSF-C610
Length: 6 m



CLADDING GASKET

PRESS-IN

Glasses: 06.06

Ref.: 009JOINT0606

Glasses: 08.08

Ref.: 009JOINT0808

Glasses: 10.10

Ref.: 009JOINT1010



CUSTOMIZE YOUR FINISHES



ANODIZED ALUMINUM
Code: 01



RAL
Code : 03

ACCESSORIES



CONCRETE SCREW HUS3 H 10X70

Ref.: 09HUS3-H10X70
ZINC STEEL - Box of 50 pieces



CONCRETE SCREW HUS HR 10X75

Ref.: 09HUS-HR10X75
STAINLESS STEEL - Box of 25 pieces



MECHANICAL WALL PLUG HSL M8/20

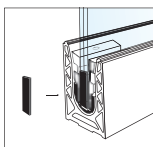
Ref.: 09HSLM8/20
STAINLESS STEEL - Box of 40 pieces

*Anchor for floor mounting depends
on the class of concrete.*

SPACERS



Ref.: 009OSF-ESPAC0606 - Glasses: 6.6
Ref.: 009OSF-ESPAC0808 - Glasses: 8.8
Ref.: 009OSF-ESPAC1010 - Glasses: 10.10



*Help maintaining a regular
space interval between the
glass panels.*

**++ For a better protection
against dust and water,
5 mm width.**

LEVELING SHIMS

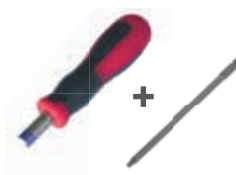


Ref.: 009SHIM-K10-10-01

SCREWDRIVER + TORX BIT



Ref.: 007-TORX-T20/150
Torx bit 1/4 - T20 LG150



Ref.: 007-TRVS-2NM
screwdriver + torx bit
Torx bit size: 2 Nm

*It allows tightening the glass
in the wedges.*

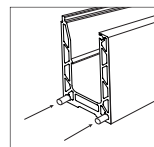


Order minimum 1 for tightening conformity

ALIGNMENT PINS



Ref.: 007PIN-06-30



*The pins allow assembling
the rails together.*

++ Save time, alignment.

CLOSING GAP FIXING HOLE



Ref.: 007BOU-D30-G



ASK FOR OUR
complete handrail brochure.

HANDRAILS



U PROFILE WOOD

Dimensions: 14.5x5x5

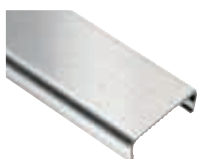
Ref.: 0010202410240W20 (raw beech)
0010202410240W10 (raw oak)

Dimensions: 18.5x5x5

Ref.: 010202810240W20 (raw beech)
0010202810240W10 (raw oak)

Dimensions: 22.5x5x5

Ref.: 0010203210240W20 (raw beech)
0010203210240W10 (raw oak)



U PROFILE STAINLESS STEEL 316

Dimensions: 14x10

Glass thickness: 13.5

Ref.: 0010201410300A4 (3 m)

Dimensions: 18x10

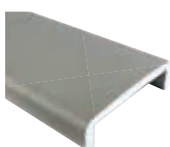
Glass thickness: 17.5

Ref.: 0010201810300A4 (3 m)

Dimensions: 22x10

Glass thickness: 19/21.5

Ref.: 0010202210300A4 (3 m)



U PROFILE ALUMINUM

Dimensions: 13x8

Glass thickness: 13.5

Ref.: 0010201308250 (2,5 m)
00102013082500 (5 m)

Dimensions: 17x8

Glass thickness: 17.5

Ref.: 0010201708250 (2,5 m)
0010201708500 (5 m)

Dimensions: 23x8

Glass thickness: 21.5

Ref.: 0010202308250 (2,5 m)
00102023082500 (5 m)



GLASS CLAMP HANDRAIL STAINLESS STEEL

Glass thickness: 12 > 17.5

Ref.: 00101030-1218

Glass thickness: 18 > 25.5

Ref.: 00101030-1926



CLAMP BETWEEN GLASS STAINLESS STEEL

Dimensions: 50 x 60

Glass thickness: 11.9 > 13.9

Ref.: 009REL5060-12-9/16

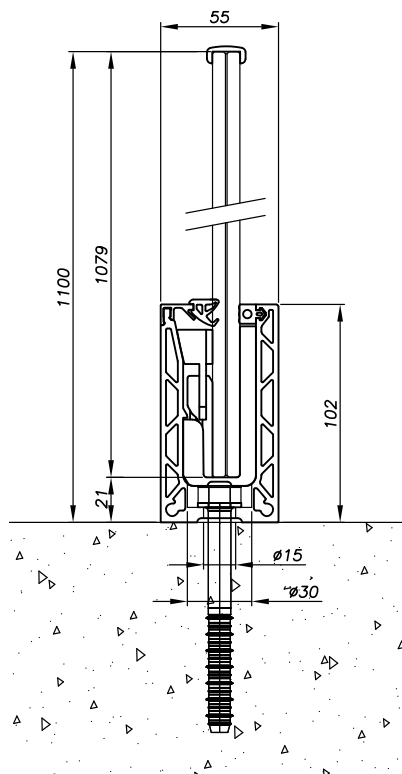
Glass thickness: 16.2 > 17.6

Ref.: 009REL5060-17.5

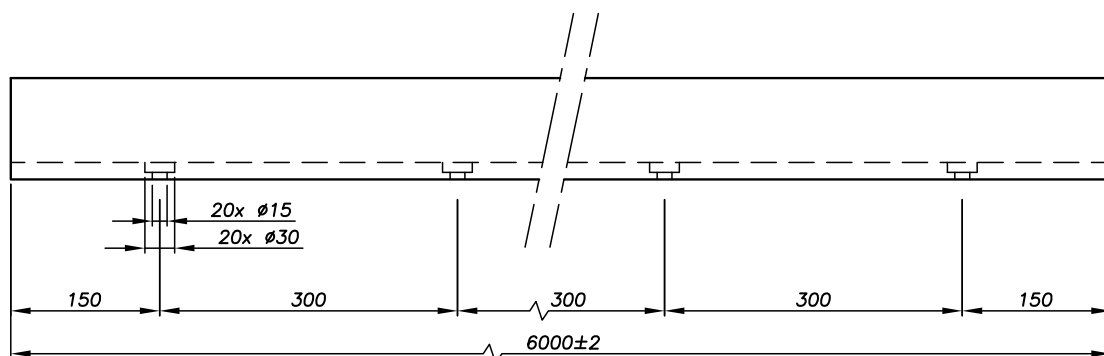
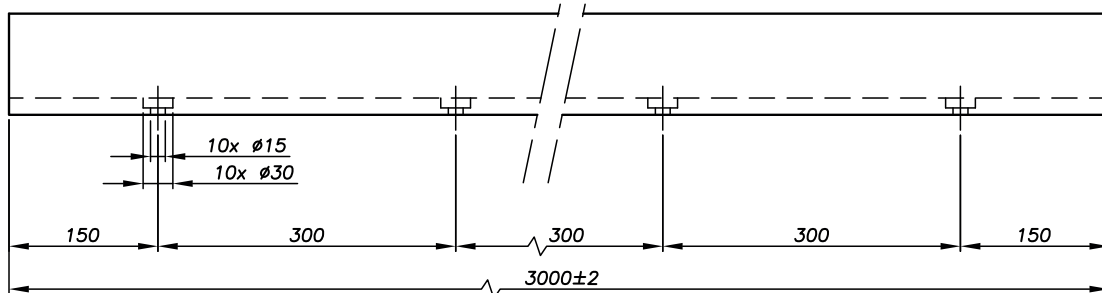
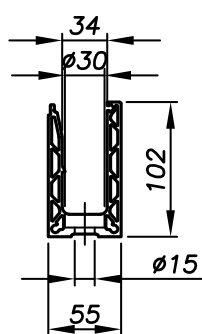
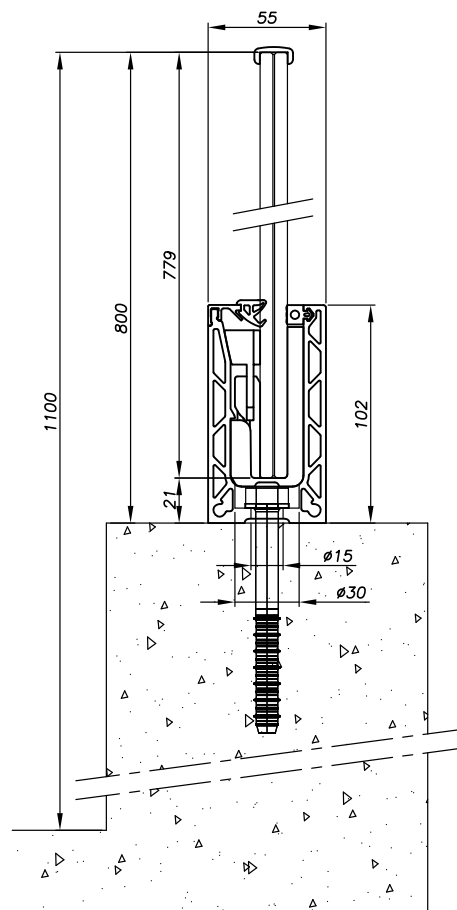
Glass thickness: 20.2 > 21.6

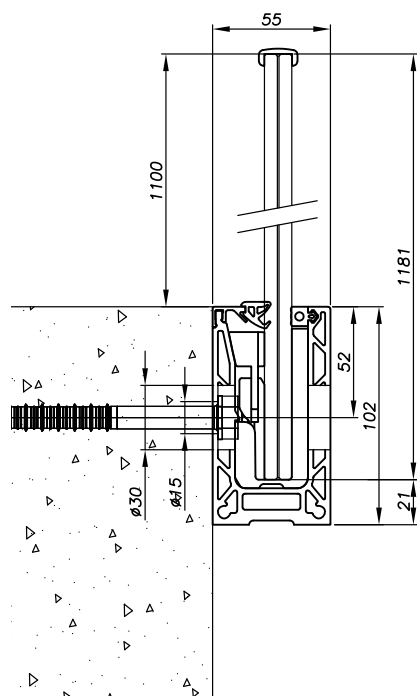
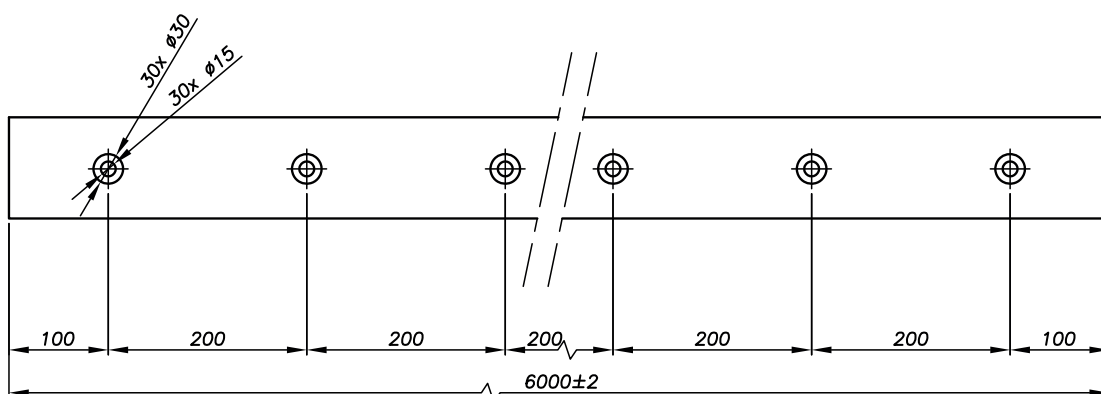
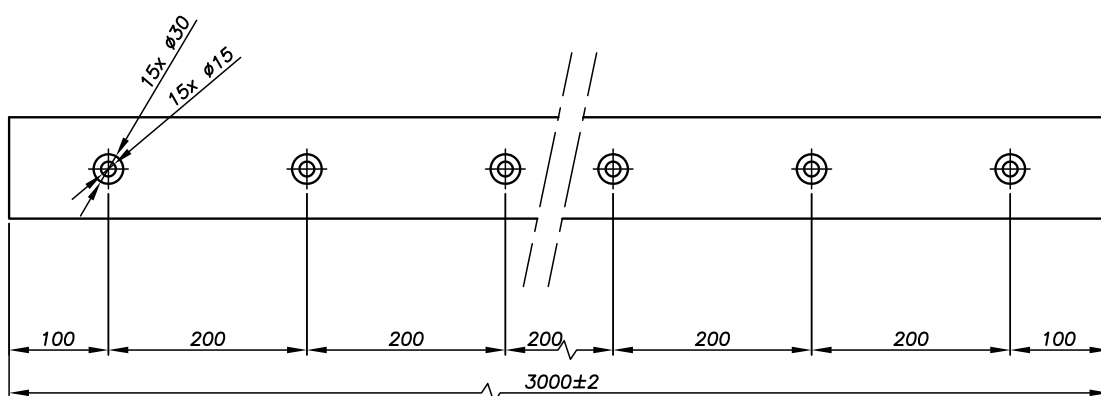
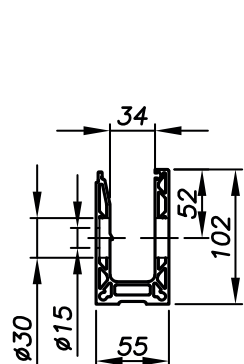
Ref.: 009REL5060-21.5

FLOOR MOUNTING



ACROTERION MOUNTING



[illegible]







CLASSIC® SABCO® OSF® DECOR® SWIMSIDE®

MEMBER OF  **SIMONSWERK**

Tel. +33(0) 4 50 08 39 00 | Fax. +33(0) 4 50 08 39 49
76, chemin des poses - 74330 Poisy (France)

sadev.com

follow us on

